

5700 SERIES

Low Energy Power Operator



Norton®
ASSA ABLOY

ASSA ABLOY, the global leader
in door opening solutions

FEATURES & FUNCTIONS

- Ease of installation and setup
- Simple instructions
- Application versatility and ease of adjustment
 - Push or pull side mounting units available
- Operates as mechanical surface close during close cycles, when door is opened manually or if power is turned off
 - Quiet operation
 - Spring force provides the feel of a normal manual door closer
 - Door can be opened manually if desired
- Norton® 1601/1601BF series door closer
 - Adjustable Spring Power
 - Backcheck Valve
 - Sweep Valve & Latch Valve
- Non-Handed
- Unit Activation Options
 - Wall switches
 - Motion sensor
 - Radio frequency device
- End-User On/Off Switch
- Hold Open options
 - 0-30 seconds (5 seconds minimum required for ADA and ANSI/BHMA A156.19)
- Obstruction Detection
 - Motor stops if door is obstructed during an opening
 - Door closes under manual spring force (not to exceed 15lbf)
- "Push and Close"
 - Allows the operator to skip the hold open time when it is not necessary or required
 - Adjustable door sensitivity
- Overload Safety Shut-Off
 - After two minutes of receiving a door activation signal, the inverter will time out and close the door
 - Prevents motor/inverter damage
- Motor Start Delay for Locking Hardware
 - 0-5 second delay to allow locking hardware to release first
- Onboard power supply for accessories: 24VDC (1.1A)

ELECTRICAL DATA

- Power Input; 120 VAC, 60Hz
- Relay Output: SPDT
 - Normally Open/Normally Closed (jumper)
 - For electric strike function

CERTIFICATIONS

- ANSI/BHMA A156.19 certified 
- Meets ANSI/BHMA A156.4 requirements
- UL / cUL listed for use on fire rated doors 
- UL10C listed for positive pressure fire test
- Comply with requirements for the Americans with Disabilities Act (A.D.A)
- This product is manufactured in an ISO 9001 facility

STANDARD APPLICATIONS

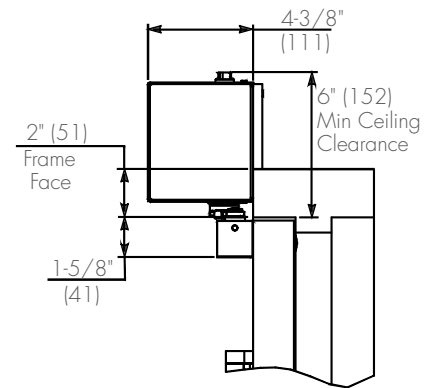
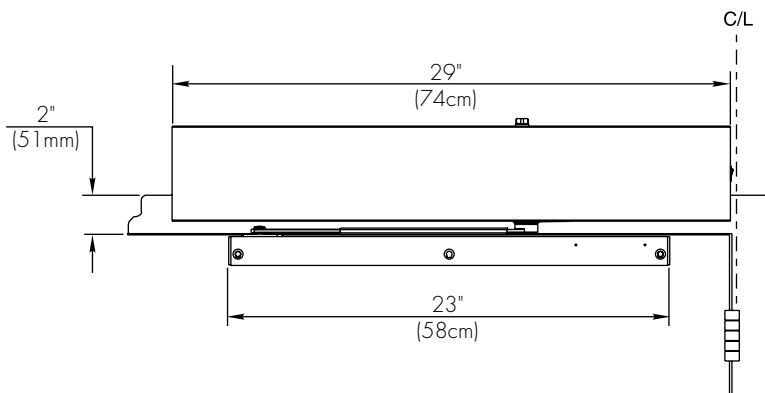


5710
HINGE (PULL) SIDE OF DOOR

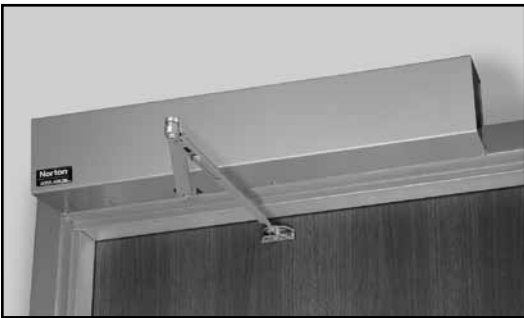
- Adjustable Stop
- 110° swing (trim permitting)

Minimum Door width
Single Door - 29" (74cm)
Double Door - 30" (76cm)

An auxiliary stop is suggested where severe conditions exist.



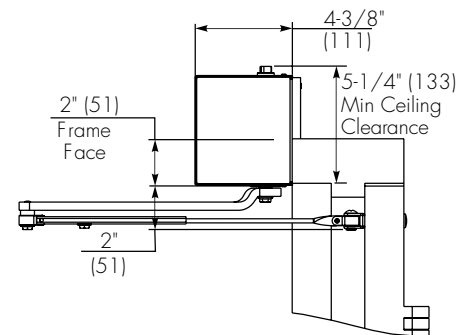
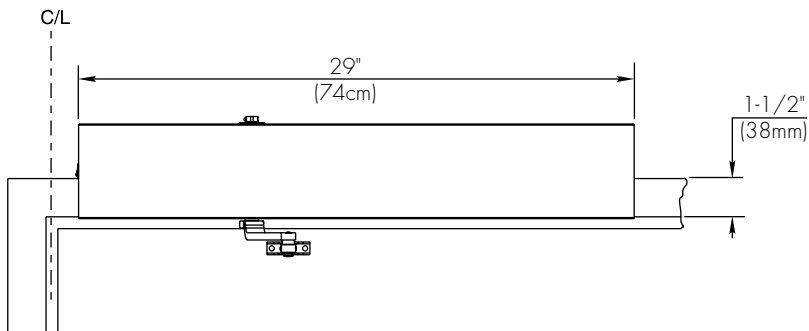
NOTE: Contact factory if door weight exceeds 250 lbs.



5730
STOP (PUSH) SIDE OF DOOR

STANDARD DUTY DOUBLE LEVER ARM

- Frame reveals 2-5/8" to 6-3/4" (67-171mm)
- An auxiliary door stop is required for these applications.
- 170° swing (trim permitting)

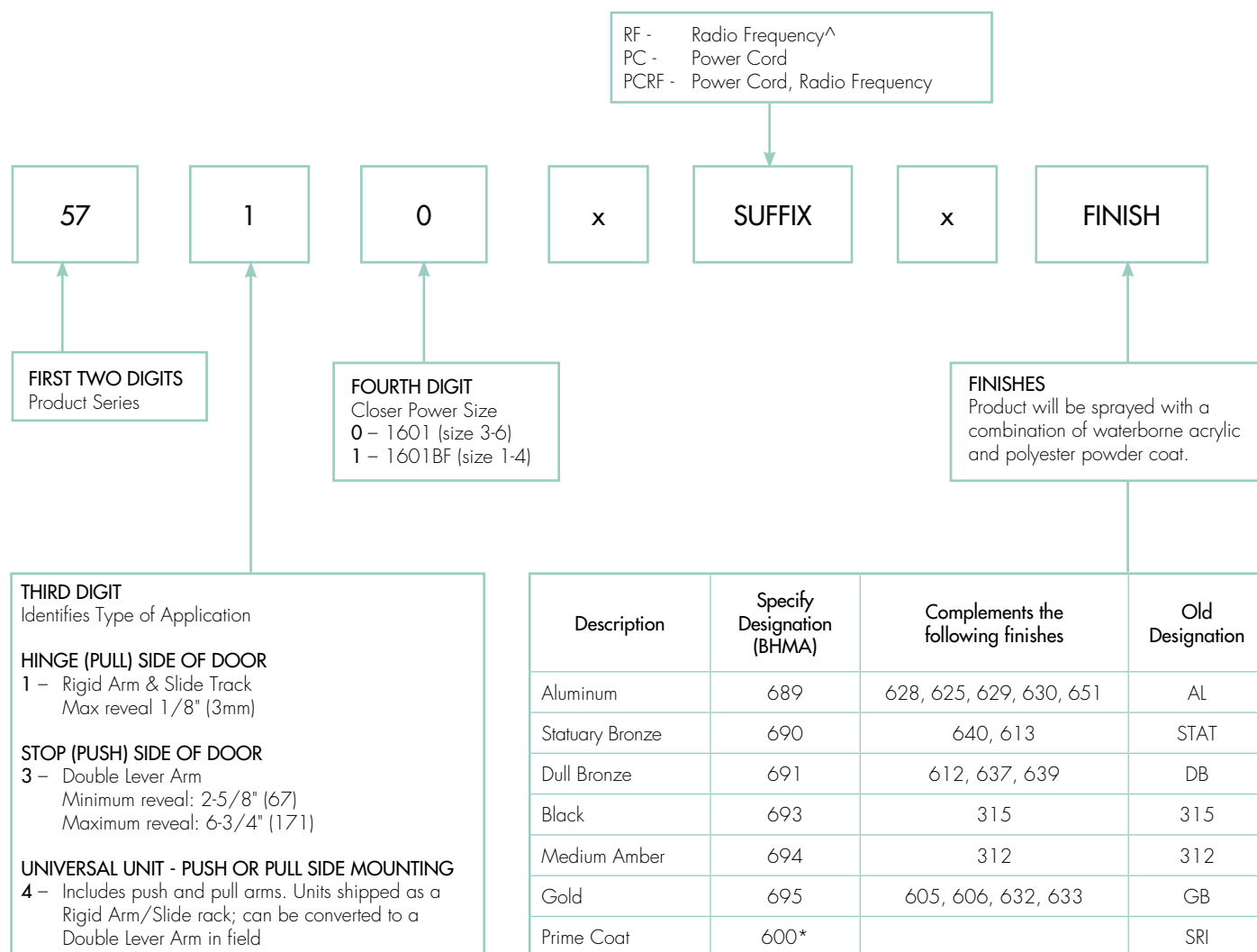


NOTE: Contact factory if door weight exceeds 250 lbs.

5700 SERIES

LOW ENERGY POWER OPERATOR

HOW TO ORDER



*600 is a special rust inhibiting prime coat. Closers can be ordered prime coat only (specify closer x 600). An additional charge applies if finish coat is required over prime coat (ex: 5710 x 600 x 689).

^ Actuators not supplied w/ RF

Note: Door switches and sensors are not included with the 5700 Series Door Operators. These items must be ordered separately.

OPERATIONAL SIGNAGE

#679 Signage Kit (supplied standard)



(1 per switch)



(1 per switch)



(2 per operator)

ACCESSORIES

Activating Door Switches



501



502

- 4-1/2" W. x 4-1/2" H.
- 15 amp @ 125 VAC
- Flush mounted – hard wired
- Fits single or 2 gang electrical box
- **501** – Stainless steel with black letters
- **502** – Blue powder coat with white letters
- Specify #542 to order surface mount box for 501 or 502 switch



504

- 5" W. x 4-3/4" H.
- 2 – SPDT UL listed switches-mom.
- 15 amp @ 125 VAC
- Fits 2-gang electrical box
- Stainless steel with blue letters



505, 531



507, 532

- 6" W. x 6" H.
- 9 volt battery
- 15 amp @ 125 VAC
- Flush mounted
- Stainless steel with blue letters
- **531, 532, 533 and 535** - radio frequency (433MHz). Used with RF option and 539. Surface mount boxes are included.
- **507, 505, 506 and 534** - hard wired*. Surface mount boxes are not included. If required, specify:
555 - 6" square surface mount box
557 - 6" round surface mount box
- * Switches may also be installed with single or double gang electrical box using fasteners included.



506, 533



534, 535



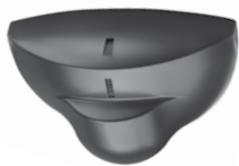
503

- 1-1/2" x 4-3/4" face plate
- SPDT UL listed switch-mom.
- 15 amp @ 125 VAC
- Fits 1-3/4" frame
- Stainless steel with blue letters

All hard wired switches are Momentary Contact SPDT, UL Listed.

ACCESSORIES

Motion Sensor



#663*

- 4-3/4" x 3-3/16" x 2" projection
- Unidirectional
- Black cover
- SPDT relay
- Adjustable angle pattern
- 24 VDC input
- Must not be placed where motion of door can be sensed

Transmitters



536

- 2-3/8" w x 4-3/16" h x 15/16" d
- Single channel



538

- 2-3/8" w x 4-3/16" h x 15-16" d
- Two channel



548

- Converts existing hard wired push plates to work with RF receivers offered after June 2013
- Single channel
- 9 volt

Radio Frequency Receiver



539

- 433 MHz

Touch Less Wall Switch



697

- Single gang and double gang
- Doppler radar
- Sensor requires movement for activation
- Variable relay-hold time from 1 to 10 seconds
- Range of 2" to 24" – field adjustable
- 2-3/4" (Single); 4-1/2" (Double) W x 4-1/2" H

Low Profile Push Plate



- 36" x 6" activation zone
- 1" low profile depth
- Stainless steel face plate
- Adapts to either wireless or hardwired installations
- 638 - Wireless
- 639 - Hardwired

Switch Post



500 & 530

- 4" x 6" x 40" x 3/16" wall thickness
- 9 volt battery
- RF temperature range: -4° F to 122° F
- 689 (aluminum) or 690 (dark bronze) finishes; specify when ordering
- Standard formed plastic cap
- Surface mounted (above ground)
- 530 - radio frequency transmitter
- 500 - hard wired switch
- 530POST - post only; switch not included

* Use of motion sensors must be approved by the local authority having jurisdiction.